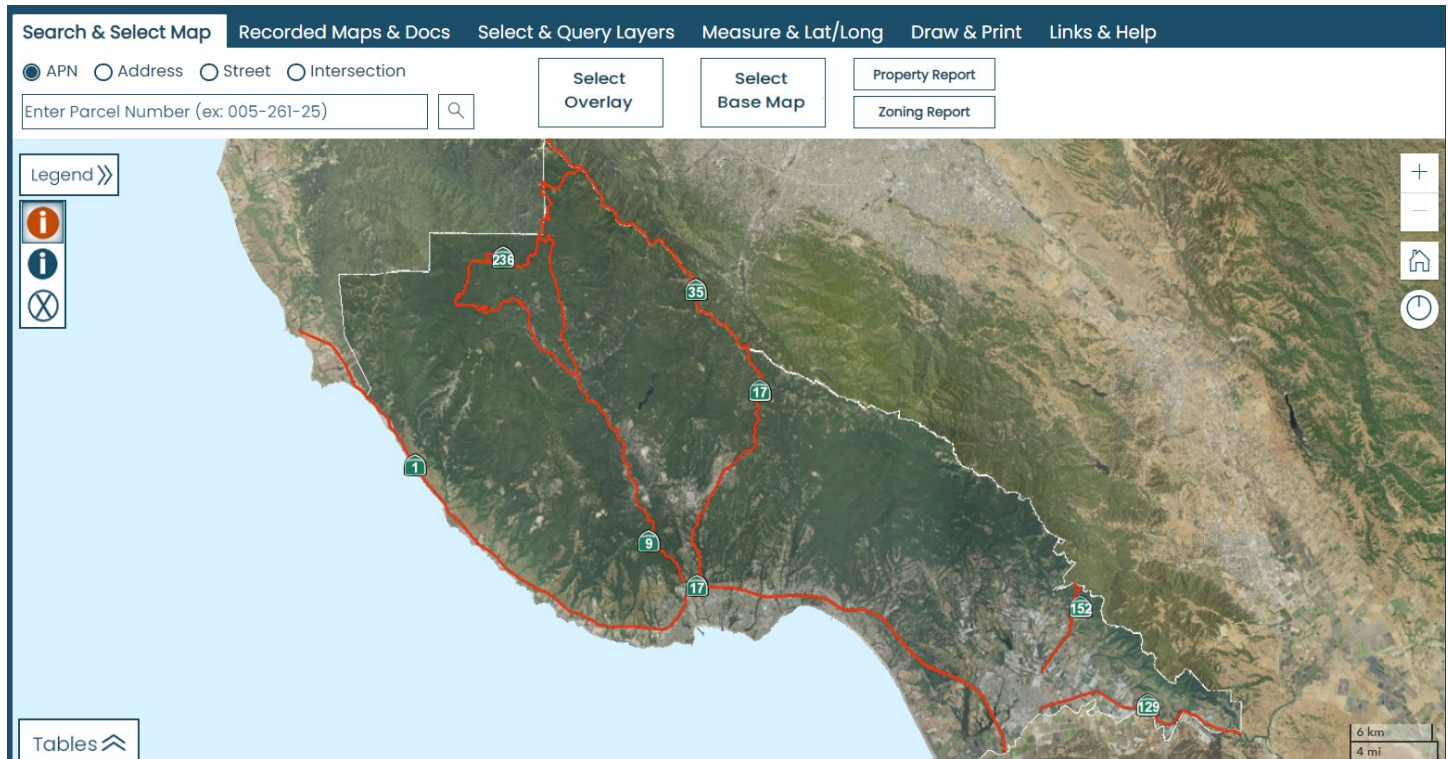


Welcome to GISWeb Help


Below is GISWeb as it appears when first opened:




There are SIX tabs across the interface. You can click on the links below to jump to that location in the help:

- [Search and Select Map](#)
- [Recorded Maps](#)
- [Query Visible Layers](#)
- [Measure & Lat/Long](#)
- [Draw and Print](#)
- Links and Help

In the top left of the map view there are 4 items:

If you click on the Legend Arrow  it will open the layer listing which allows you to turn off and on layers.

If you click on the RED ID  tool it allows you to click on the map and get the outline of the parcel and the parcel attributes will be displayed at the bottom of the window in the tables section.

Parcel Information

Close	Parcel Info	Land Use	Biotic & Water Resources	Special Districts	Jurisdictional, Elections, & Census	Hazards & GeoPhysical	School Districts & CSAs
Parcel Information	APN (Click for Assessor Info)	06806101		Sect Town Range		SEC30; T10S-R1W	
	APN Map (Click for Map)	06806		Tax Code Areas		92-006	
	Click for Permit Data:	Permit Data		Map Book		068	
Recorded Maps & Docs	Click for Other Planning Data:	Planning Data		Home Owner Exemption (HOE=Yes)			
Select and Query Results	Assessor's Acreage	3.9440		Assessor's Use Code Description		061-HOMESITE/1-4.9 ACRES	
	Assessor's Square Feet	171800.6400		Assessor's Use Code		061	

Recorded Maps and Docs contains layers that have linked documents attached to them like soil reports etc.

Close	Recorded Maps	Non Recorded Maps	Improvement Plans	Sanitation	Wells	Soil Rpts	Geologic Rpts	FEMA	Benchmarks	Zoning History	Zoning Hist (Parcel)
Parcel Information	Volume-Page	Click for Link	Map Title	Surveyor		Owner		Tract		MLD	
	008PM67	Click for Link		CEI1192		MCNEILL, MARY				L-164	
	022M18	Click for Link		WALLACE, JOHN		MAJORS, J. L.					
Recorded Maps & Docs	021M76	Click for Link		LS0815		CALIFORNIA LANDS INC.					
	008PM35	Click for Link		CEI2862		CALIFORNIA CERTIFICATE FUND				L-249	
Select and Query Results	089M19	Click for Link	RECORD OF SURVEY SHOWING AZIMUTH MARKS FOR EXISTING GPS STATIONS	LS5418							
			RECORD OF SURVEY FOR SANTA CRUZ								

Recorded Maps and Docs Tab

Search & Select Map
Recorded Maps & Docs
Select & Query Layers
Measure & Lat/Long
Draw & Print
Links & Help

Select Recorded Maps and Documents Layer

Recorded Maps

📍
📏
📐
📏

Enter Recorded Map Number (ex: 005PM35)

🔍

Recorded Maps

- Recorded Maps
- NonRecorded Maps
- Improvement Plans
- Sanitation As-built
- Wells
- Soil Reports
- Geologic Reports
- FEMA LOMAs and Certificates
- Elevation Benchmarks
- Zoning History
- Zoning History (Parcel Based)
- Turn Off Layer

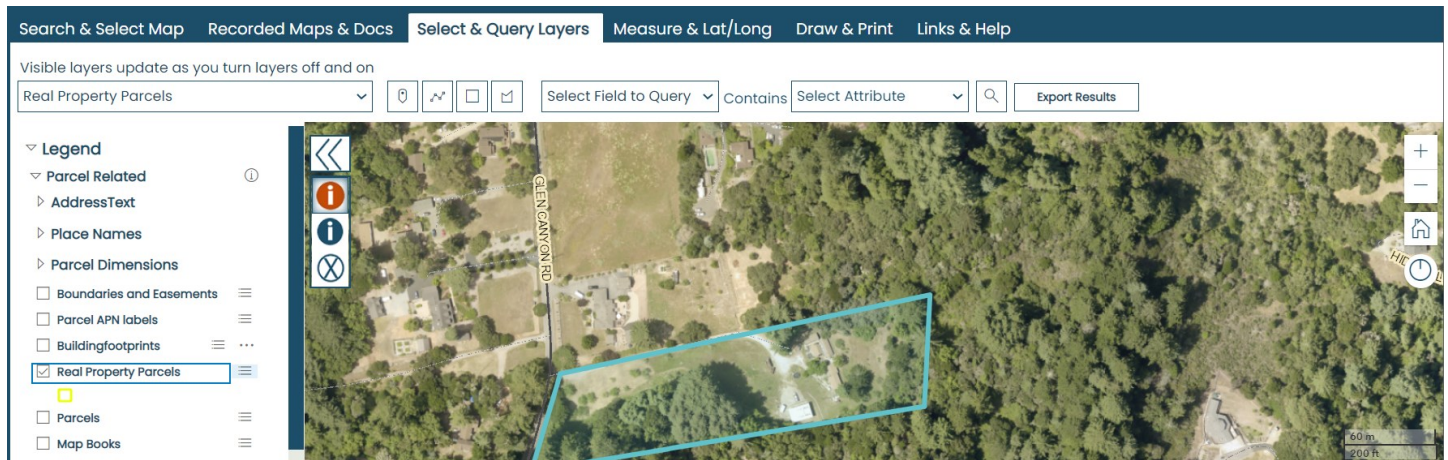
The Recorded Maps and Docs tab is designed specifically for working with the eight layers show in the drop-down above. The application starts with the Recorded Maps layer selected (most popular) and from there you can use the point, line, rectangle, or polygon tools to select features on the map. You can also search for a specific map number and then click the magnifying glass tool.

The results of either selecting features on the map or entering an map number are displayed in the bottom section in the Recorded Maps and Docs tab. This table provides information about the recorded document and has links to the scanned PDF. To open the reference document click on 'Click for Link'.

Close	Recorded Maps	Non Recorded Maps	Improvement Plans	Sanitation	Wells	Soil Rpts	Geologic Rpts	FEMA	Benchmarks	Zoning History	Zoning Hist (Parcel)
Parcel Information	Volume-Page	Click for Link	Map Title	Surveyor		Owner		Tract		MLD	
	008PM67	Click for Link		CEI1192		MCNEILL, MARY				L-164	
	022M18	Click for Link		WALLACE, JOHN		MAJORS, J. L.					
Recorded Maps & Docs	021M76	Click for Link		LS0815		CALIFORNIA LANDS INC.					
	008PM35	Click for Link		CEI2862		CALIFORNIA CERTIFICATE FUND				L-249	
Select and Query Results	089M19	Click for Link	RECORD OF SURVEY SHOWING AZIMUTH MARKS FOR EXISTING GPS STATIONS	LS5418							
			RECORD OF SURVEY FOR SANTA CRUZ								

Clicking on the tabs along the bottom will turn on the layer and show the results for the area you selected if you used the spatial selection tools (all layers are queried at once, the tabs control the visibility of the layers, as does the drop-down on the top tab).

Query Visible Layers Tab



The Query Visible Layers tab allows you to select features from the target visible layer. The drop-down lists all the visible layers (layers checked on in the layer list or turned on from choosing from the Select Map feature on the Search tab).

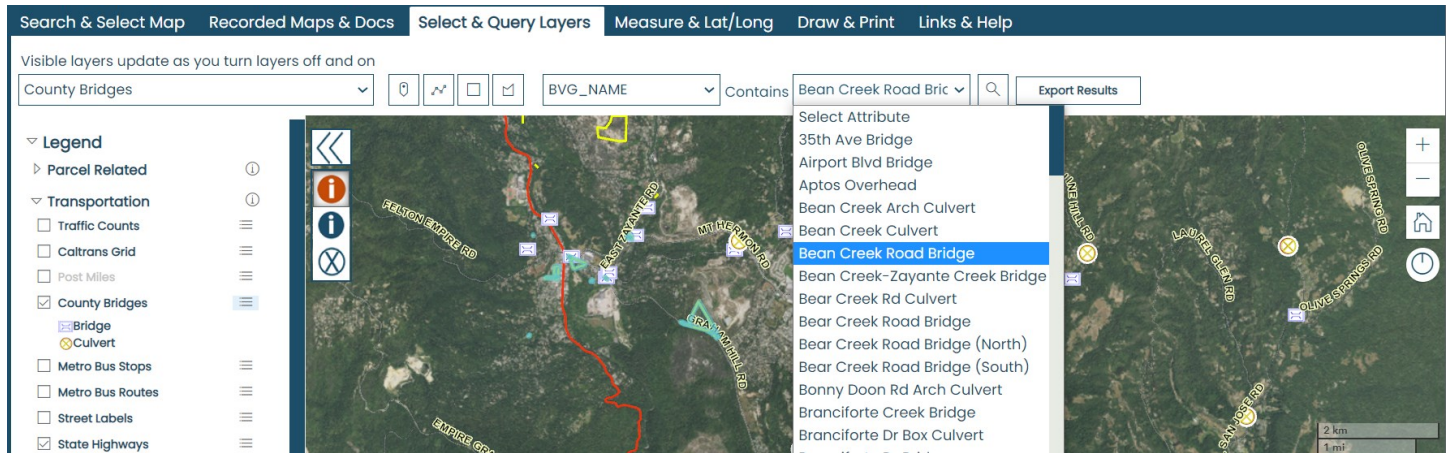
You can use the select tools (point, line, rectangle, or polygon) to select features on the map. The results are listed in the bottom tables section under the Select and Query Results section. If you click on the magnifying glass, you will zoom to that feature.

You can also build a query from the layers attributes. First select the field you want to query. This gets populated when you choose a target visible layer. Once you select a field, all the possible attributes are listed in the Select Attribute drop-down. You can then select the attribute and click the magnifying glass. In some cases, only one record will be returned, in others several records will be returned depending on the layer.

Close	Results	APN	APNNODASH	SITEADD	SITEADD2	OWNNA
Parcel Information	Zoom	065-081-33	06508133			SANTA C
Recorded Maps & Docs	Zoom	071-211-09	07121109			SANTA C
Select and Query Results	Zoom	061-371-16	06137116	3650 GRAHAM HILL RD	SANTA CRUZ CA 95066	SANTA C

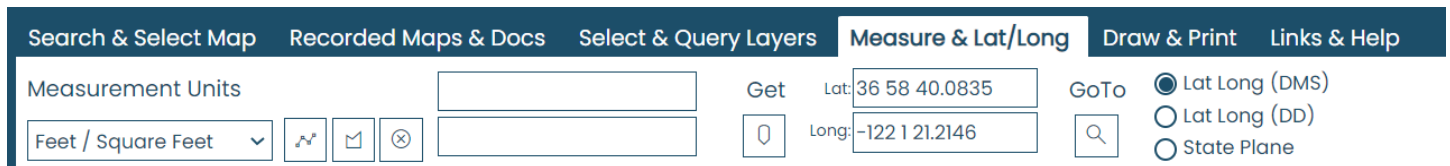
Turning on the County Bridges layer gives you a list of attributes to query (BVG_NAME), then select the attribute

Bean Creek Road Bridge. The results will be populated in the results tab.



If you build a query that returns more than 5,000 records, you will get a message saying the query cannot return the results. This is the current size limitation for the web-based app. You can export the results to a comma separated file (CSV File), that can then be added to excel.

Measure & Lat/Long Tab




The Measure and Lat Long tab allows you to measure distance and area on the map. You select the units you want to measure in and then click the line tool for distance and the polygon tool for areas. The results will be displayed in the text boxes next to the tools.

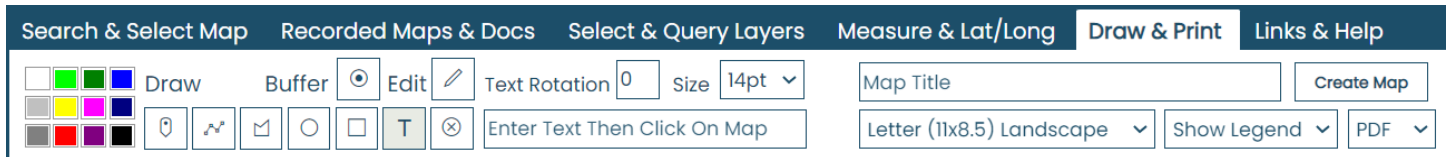
You can get coordinates from the map in either Lat Long (Degrees Minute Seconds) Lat Long (Decimal Degree) or in the State Plane coordinate system (use the buttons on the far right to pick between the two - default is Lat-Long. Click on the map pin button below the word Get and then click on the map. The coordinates will be displayed in the text boxes. You can also enter coordinates in Latitude & Longitude or State Plane (NAD83 Zone III Feet) and then click the magnifying glass under GoTo button to zoom to the location.

Draw and Print Tabs



You can use the color picker to select the color of the shape you would like to draw. Once you pick a shape options will appear to the left of the tools. The edit tool allows you to select graphics

then resize, rotate, or edit vertices. The Buffer  tool allows you to enter a buffer distance and then click on a shape you have drawn or the results of a parcel query to then see an offset. An example of using the buffer tool would be to locate zoning setbacks. In the example below the 'T' text tool was clicked. You can now set the size and rotation of the text, then click on the map to place the text (The edit tool will not allow for rotating text).



The right side of the tab has options for creating a PDF of the map. You can enter a title, the page layout, if you want a legend, and if you want a .jpg instead of a pdf. Then click the Create Map button to have a PDF created and opened in a new tab.

Thank you for reviewing the GISWeb Help. We hope it will improve your experience using the application. For additional questions please feel free to contact any of the GIS Staff:

Paul Garcia - GIS Analyst (831) 454-3094 Paul.Garcia@santacruzcounty.us

Jenni Gomez - GIS Analyst (831) 454-3126 Jennifer.Gomez@santacruzcounty.us

Matt Price - GIS Manager (831) 454-3101 Matt.Price@santacruzcounty.us