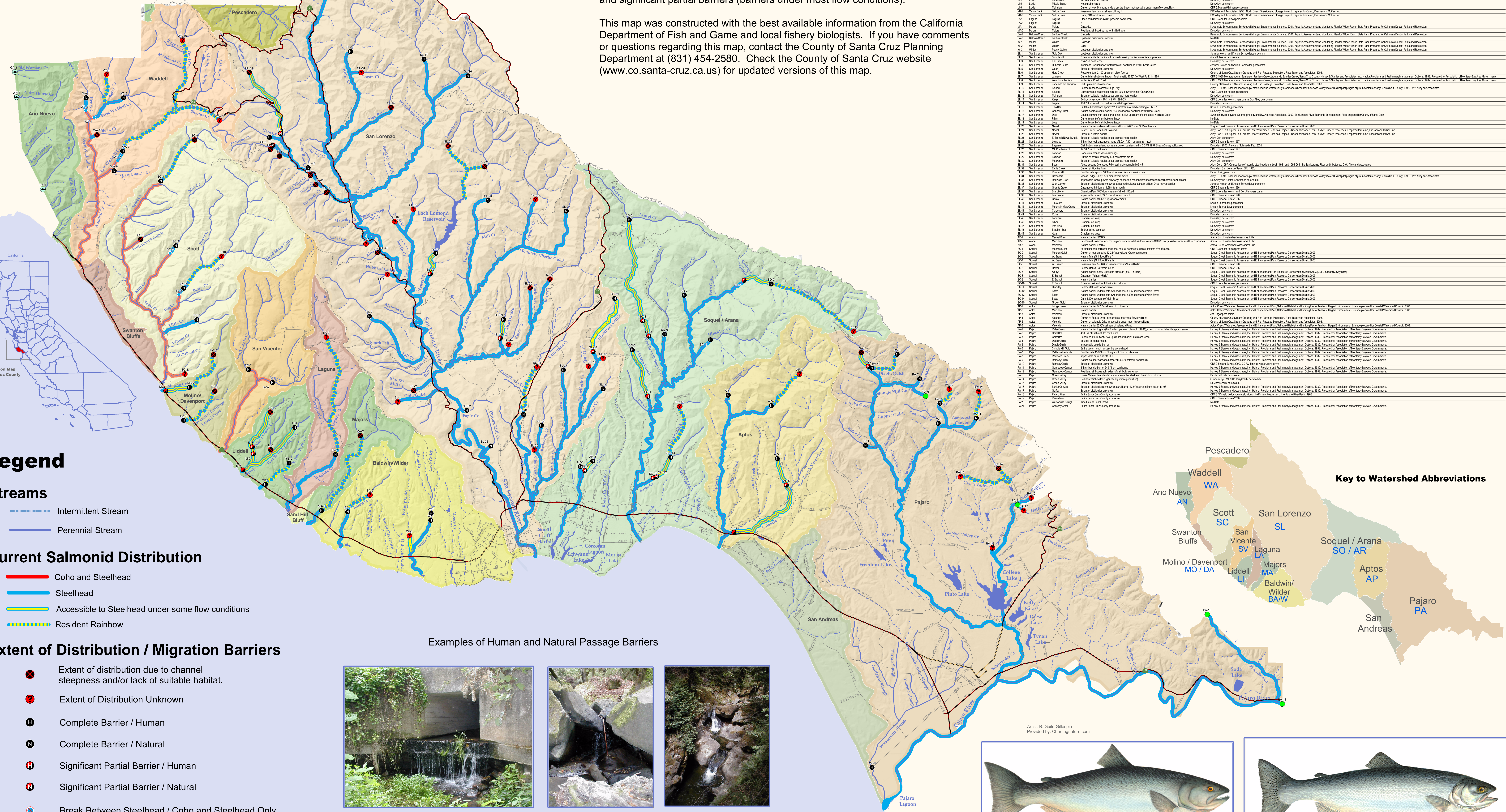
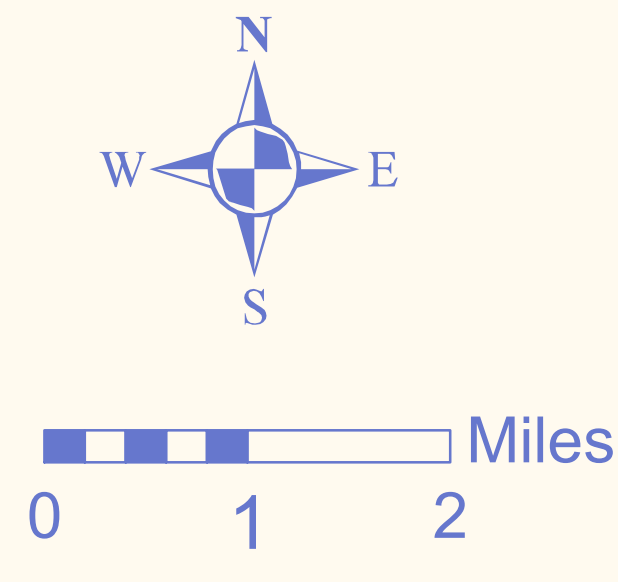
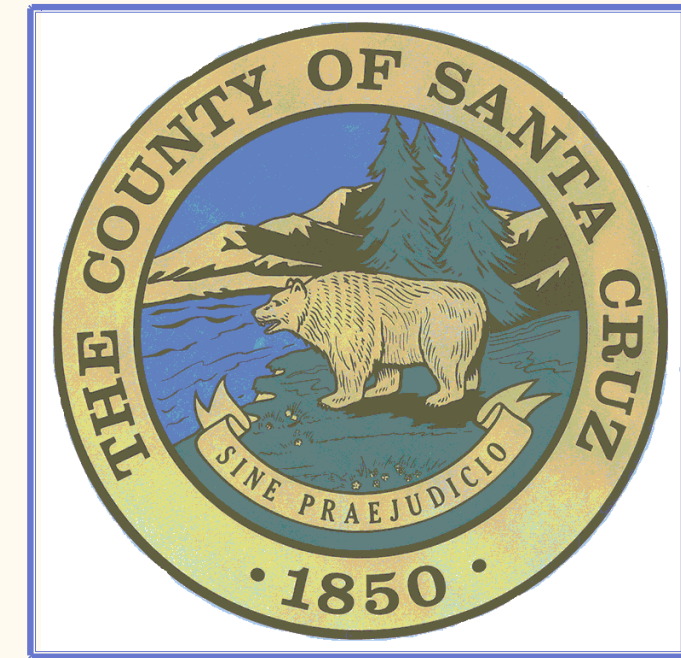


# Steelhead and Coho Salmon Distribution

## Santa Cruz County May 2004

This map shows the current distribution of steelhead and resident rainbow trout (*Oncorhynchus mykiss*), and coho salmon (*Oncorhynchus kisutch*) in Santa Cruz County streams. Steelhead and coho salmon migrate from the ocean as adults to spawn and rear in freshwater streams. Resident rainbow trout complete their life cycle in freshwater streams. This map shows the location and type (a natural or human-constructed feature) of two kinds of migration barriers: complete barriers and significant partial barriers (barriers under most flow conditions).

This map was constructed with the best available information from the California Department of Fish and Game and local fishery biologists. If you have comments or questions regarding this map, contact the County of Santa Cruz Planning Department at (831) 454-2580. Check the County of Santa Cruz website ([www.co.santa-cruz.ca.us](http://www.co.santa-cruz.ca.us)) for updated versions of this map.



| Key | Watershed        | Stream                 | Distribution Extent | Source                                 |
|-----|------------------|------------------------|---------------------|----------------------------------------|
| WA  | Waddell          | Waddell Creek          | Steelhead           | California Department of Fish and Game |
| AN  | Ano Nuevo        | Ano Nuevo Creek        | Steelhead           | California Department of Fish and Game |
| SC  | Scott            | Scott Creek            | Steelhead           | California Department of Fish and Game |
| SL  | San Lorenzo      | San Lorenzo River      | Steelhead           | California Department of Fish and Game |
| SV  | San Vicente      | San Vicente River      | Steelhead           | California Department of Fish and Game |
| LA  | Laguna           | Laguna River           | Steelhead           | California Department of Fish and Game |
| MA  | Majors           | Majors Creek           | Steelhead           | California Department of Fish and Game |
| BA  | Baldwin/Wilder   | Baldwin/Wilder Creek   | Steelhead           | California Department of Fish and Game |
| LI  | Liddell          | Liddell Creek          | Steelhead           | California Department of Fish and Game |
| MO  | Molino/Davenport | Molino/Davenport Creek | Steelhead           | California Department of Fish and Game |
| DA  | Davenport        | Davenport Creek        | Steelhead           | California Department of Fish and Game |
| SO  | Soquel/Arana     | Soquel/Arana River     | Steelhead           | California Department of Fish and Game |
| AR  | Arana            | Arana River            | Steelhead           | California Department of Fish and Game |
| AP  | Aptos            | Aptos River            | Steelhead           | California Department of Fish and Game |
| PA  | Pajaro           | Pajaro River           | Steelhead           | California Department of Fish and Game |
| SA  | San Andreas      | San Andreas River      | Steelhead           | California Department of Fish and Game |

### Legend

- Streams**
- Intermittent Stream
  - Perennial Stream

- Current Salmonid Distribution**
- Coho and Steelhead
  - Steelhead
  - Accessible to Steelhead under some flow conditions
  - Resident Rainbow

### Extent of Distribution / Migration Barriers

- Extent of distribution due to channel steepness and/or lack of suitable habitat.
- Extent of Distribution Unknown
- Complete Barrier / Human
- Complete Barrier / Natural
- Significant Partial Barrier / Human
- Significant Partial Barrier / Natural
- Break Between Steelhead / Coho and Steelhead Only
- Steelhead Downstream of Santa Cruz County
- Whole Stream In Santa Cruz County Accessible

### Examples of Human and Natural Passage Barriers



LI-5 - Perched Culvert on West Liddell Creek - Bonny Doon Road  
MA-1 - Boulder Cascade on Majors Creek  
SL-14 - Boulder Cascade on Kings Creek



Coho Salmon  
Steelhead/Rainbow Trout