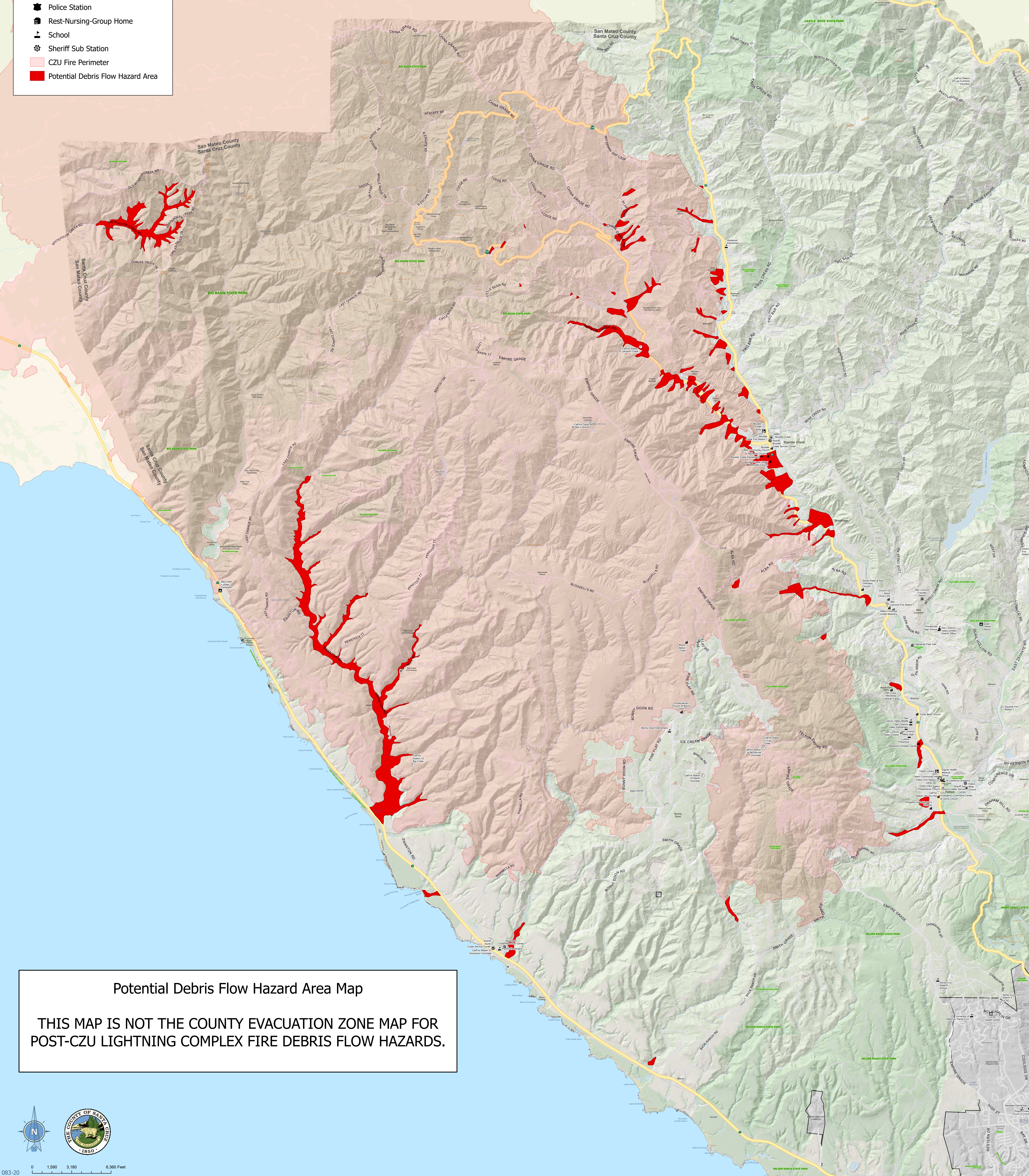


- Legend**
- Facilities**
- AMR
 - Camp/Recreation
 - Church
 - Clinic
 - County Owned Building
 - EOC
 - Fire Station
 - Hospital
 - Library
 - Police Station
 - Rest-Nursing-Group Home
 - School
 - Sheriff Sub Station
 - CZU Fire Perimeter
 - Potential Debris Flow Hazard Area

The debris flow polygons shown on this map show areas within and downslope of the CZU Lightning Complex Fire Burn Area where habitable structures may be impacted in the event of a debris flow. This map is not intended to be fully comprehensive or conclusive, but rather to serve as a tool to assist the Santa Cruz County Offices of Emergency Management, County Sheriff's office, local Fire Protection Districts, local first responders, Santa Cruz County Department of Public Works, Caltrans, water districts, utility companies, and other responsible agencies in the development of more detailed post-fire emergency response plans. This information represents a combination of State-identified "Values at Risk" (VARs) listed in the Watershed Emergency Response Team (WERT) Report, as well as County identified VARs based on site specific field mapping and Geographic Information Systems (GIS) analysis conducted by Santa Cruz County geologic staff. This map is not intended to make any representation, express or implied, regarding the risk level of individual home sites. Any home downslope of a burned area should be assumed to be at elevated risk of debris flows and landslides. All property owners within or downslope of the CZU Fire Burn Area are encouraged to consult with a professional geologist to determine the risk of their structure being impacted by debris flows or other land movement. The path of a debris flow is unpredictable and may differ from that assumed in the evaluations upon which this map is based. Areas outside the debris flow polygons may be inundated; some properties not inundated may be cut off from emergency response personnel due to debris flows blocking roadways.



Potential Debris Flow Hazard Area Map

THIS MAP IS NOT THE COUNTY EVACUATION ZONE MAP FOR POST-CZU LIGHTNING COMPLEX FIRE DEBRIS FLOW HAZARDS.